

# PPE Detection

Protect your teams and reduce your liability with an automated AI powered edge and cloud-based solution that enables PPE compliance.



## Product overview

**PPE is there to protect our workers, the impact to the person involved if not wearing it, or wearing incorrect PPE, is potentially fatal and there is definitely a high risk of injury. In addition to the safety risk, it also creates a liability issue for the employer.**

Clearway Technology, with partner LociLabs, has developed a new automated AI powered edge and cloud-based PPE detection service which can be deployed with its range of rapidly deployable, mobile CCTV Technology Towers or via clients' existing IP CCTV systems.

**According to the HSE, there were 39 fatal injuries to workers in 2020/21.** This is in comparison with the annual average number of 36 fatalities for 2016/17-2020/21p. There are 61,000 non-fatal injuries to workers each year averaged over the three-year period 2018/19-2020/21.

Provisional figures for 2020/21p show a total of 1,260 notices issued by HSE inspectors in Construction. There were 76 prosecution cases led by HSE or, in Scotland, the Crown Office and Procurator Fiscal<sup>5</sup> where a verdict was reached in 2020/21, resulting in £5.3 million in total fines averaging around £80,000 per conviction.

**In 2019/20 there were 144 cases resulting in 138 convictions (96%). This led to £7.8 million in total fines and average fines of around £57,000.**

## Why Clearway PPE Detection?

- ✓ Understand Health and Safety breaches and detect risks with real-time detection, reporting and automated email notifications on non-compliance
- ✓ Benefit from a proactive approach to PPE compliance
- ✓ Near miss reporting
- ✓ Snapshots of non-compliance for visual proof
- ✓ Tailor the system to monitor the minimum PPE requirements of a specific site
- ✓ Mitigate false positive alerts with specific detection zones

Wearing the correct PPE not only reduces workplace injury, which in turn means a reduction in absence, it helps companies avoid prosecutions, fines, and legal fees.

This new system provides real-time detection and notification to Clearway's cloud-based analytics platform which can provide statistics, automated email notifications and near miss reporting accompanied by snapshots of the non-compliant wearing of hard hats, hi-visibility trousers or hi-visibility vest or jackets.

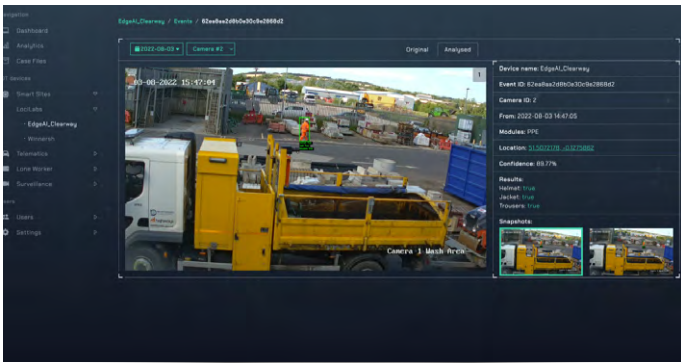
The system can easily be tailored to monitor the minimum PPE requirements of a specific site, whether that is full PPE or just hard hat and jackets only. Detection zones can also be implemented to mitigate false positive alerts for areas where PPE is not required.



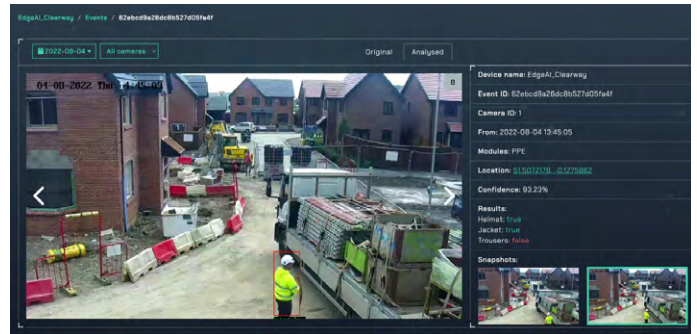
PRODUCT BRIEF  
**PPE Detection**

Clearway's inView CCTV Technology Tower is a swift to deploy mobile technology tower for instant CCTV and video analytics, stopped vehicle detection, alarm systems, air quality monitoring and more.

The solar-powered tower can be delivered and located in minutes and is remotely configured and monitored, taking away the dangers of having operatives in live carriageways. Its remote 4G connectivity also removes the necessity for civil engineering dependent cabled infrastructure.



PPE is there to protect our workers, the impact to the person involved if not wearing it, or wearing incorrect PPE, is potentially fatal and there is definitely a high risk of injury but also, companies have to ask themselves what the impact is on them as an employer.



**See how we can help you, talk to our experts today**



**About The Clearway Group**

The Clearway Group, established in 2016, is a leading European-wide commercial security services provider specialising in securing vulnerable properties, sites and assets. Growing organically and via acquisition, the Group is managed by an experienced team with proven industry success and a clear vision for growth.

T: 0344 811 7100 E: [enquiries@clearway.co.uk](mailto:enquiries@clearway.co.uk)

[www.clearway.co.uk](http://www.clearway.co.uk)   

