

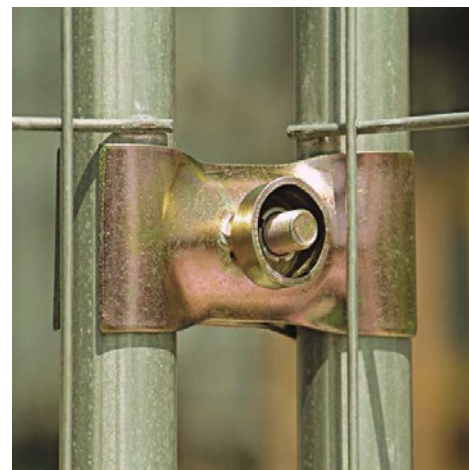
Heras Temporary Fencing



Heras temporary fencing is a 2m high physical, metal barrier that provides a visual boundary and can be easily repositioned.

Specifications : Heras Temporary Fencing

Available as round corner and square corner option, Heras fencing provides a strong perimeter that will remain standing in all conditions



Technical Information

| | |
|------------------------|----------------------|
| Panel size | 2m high x 3.5m wide |
| Material | Galvanised Steel |
| Mesh size | 262mm x 43mm |
| Weight (square corner) | 14kg per panel |
| Weight (round corner) | 16kg per panel |
| Frame tube size | 38.1mm, round |
| Corner structure | Smartweld technology |
| Certification | BS1722 |

Panels are held in place by specially designed 'feet' to keep the panels upright.

Available in two versions, with or without the stability strut.



To find out how we can help you

Call: **01322 479652** or visit **www.clearway.co.uk**

clearway
BUILDING SECURITY & SUPPORT

Clearway Environmental Services (UK) Ltd.

Fountain House, Anchor Boulevard, Crossways Business Park,
Dartford, Kent DA2 6QH