

Steel Security Screens

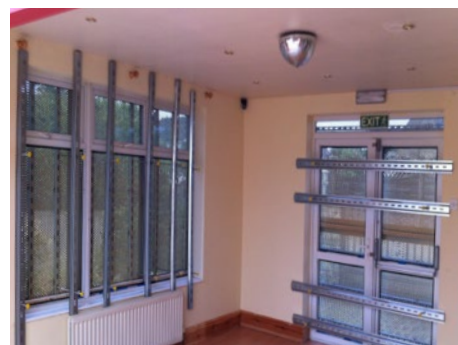


Specifications

Our steel screens are an effective visual deterrent and provide high-level physical protection against illegal entry. They provide light and ventilation and are resistant to arson attack.

Technical Information

Material	1.5mm perforated steel Pre-fabricated
Protection	Zinc coated, powder coated
Dimensions	Various: 500mm - 2500mm
Features	Internal fix locking bars Tamper-proof bolts Optional vinyl wrapped pattern (additional cost)



Printed steel screens are also available.

To find out how we can help you

Call: 01322 479652 or visit **www.clearway.co.uk**

Clearway Environmental Services (UK) Ltd.

Fountain House, Anchor Boulevard, Crossways Business Park, Dartford, Kent DA2 6QH